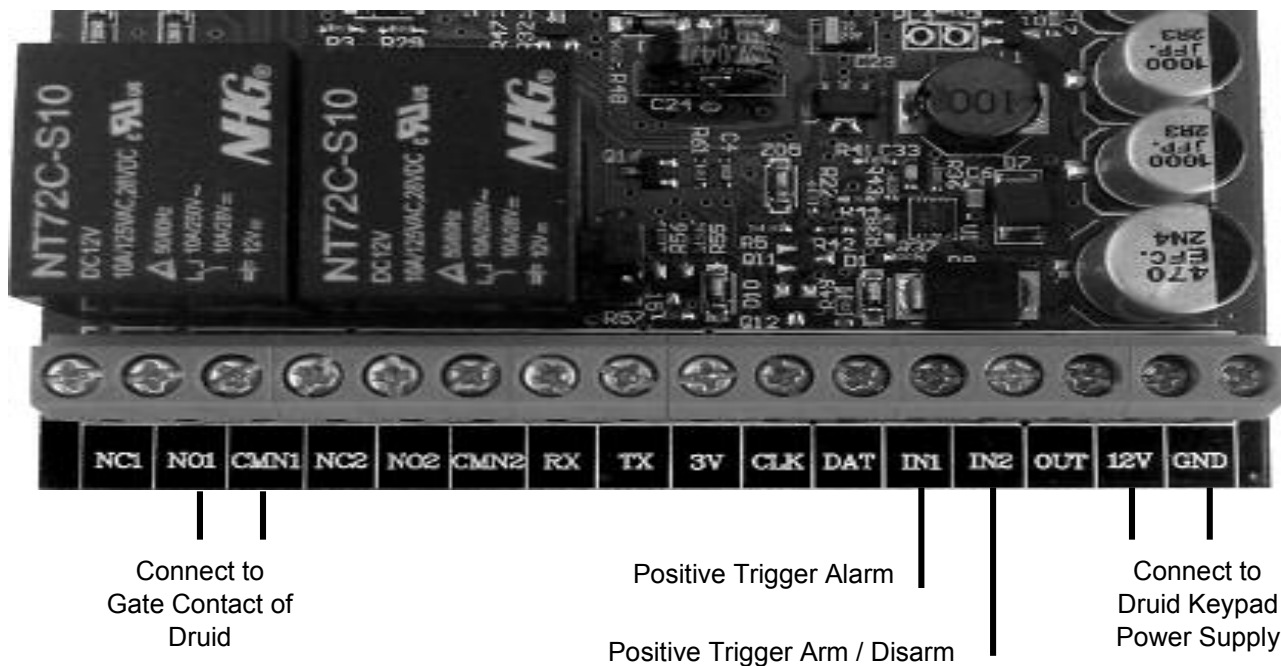
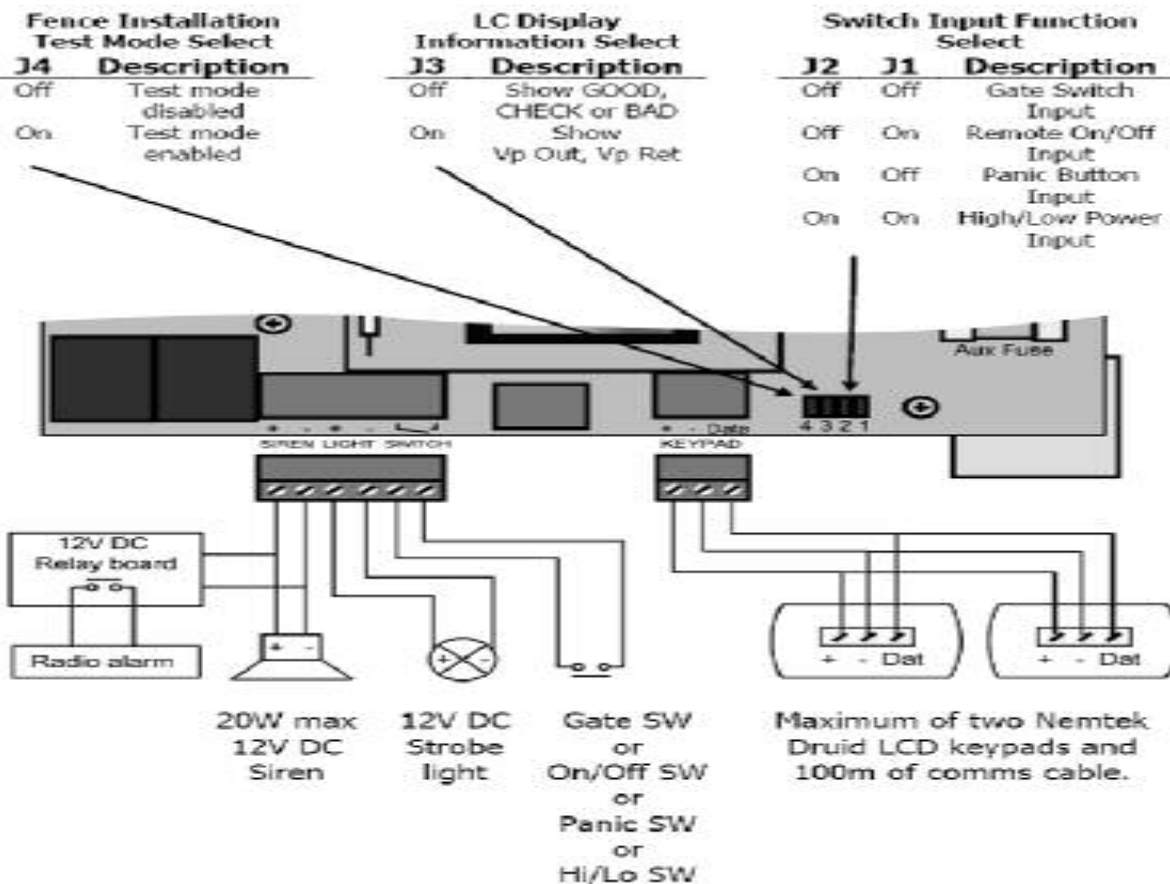


CONNECTIONS & CONFIGURATION

The configuration jumpers can be disabled by entering the installer keypad code **4020*#**.

J3 is enabled only if the configuration jumpers are enabled and the display is set using the keypad to show GOOD, CHECK or BAD, (factory default).



Remote Jumper from the Switch Input

J2 OFF and J1 ON

PROGRAMMING MODE

012345 * 0 #

Convert Strobe to Arm /Disarm

0011*#

GATE SWITCH INPUT FUNCTION to Remote Arm /Disarm

1101*#

GATE INPUT TOGGLE SELECT

1111*#

FENCE ALARM DELAY, 01 for 1 Pulse

2501*#

Exit

*# exit code.